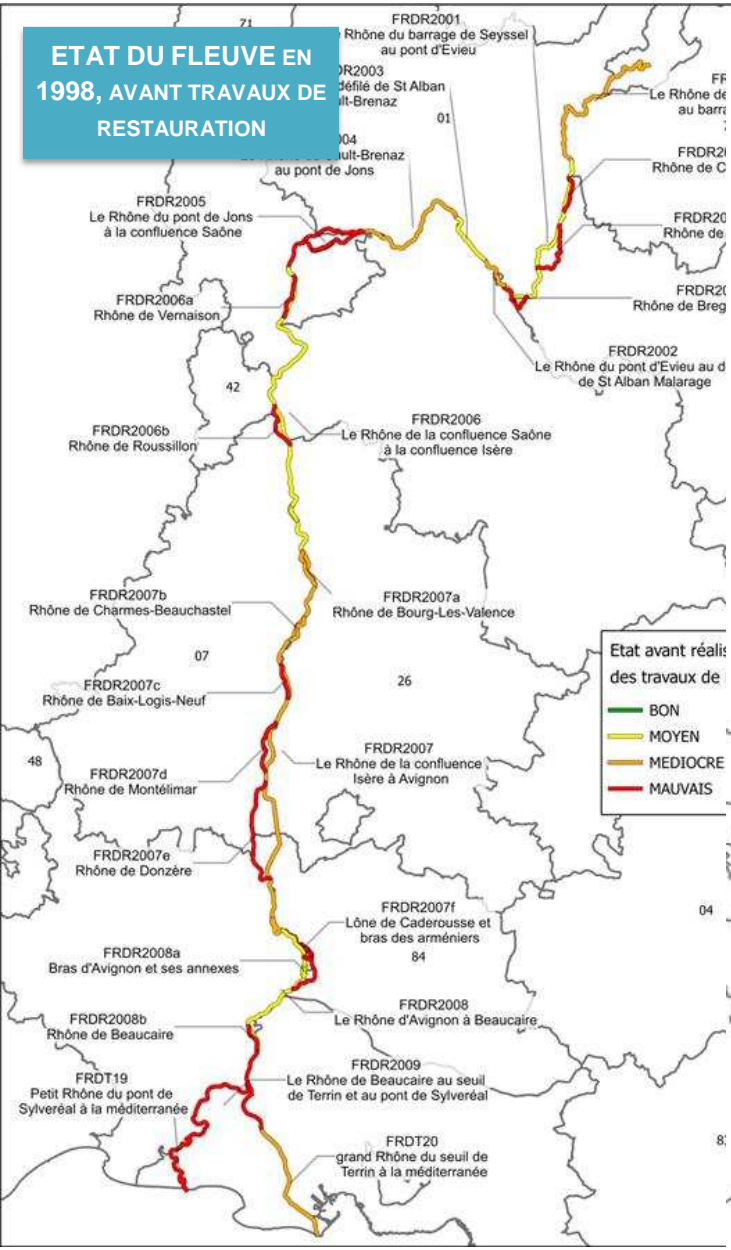
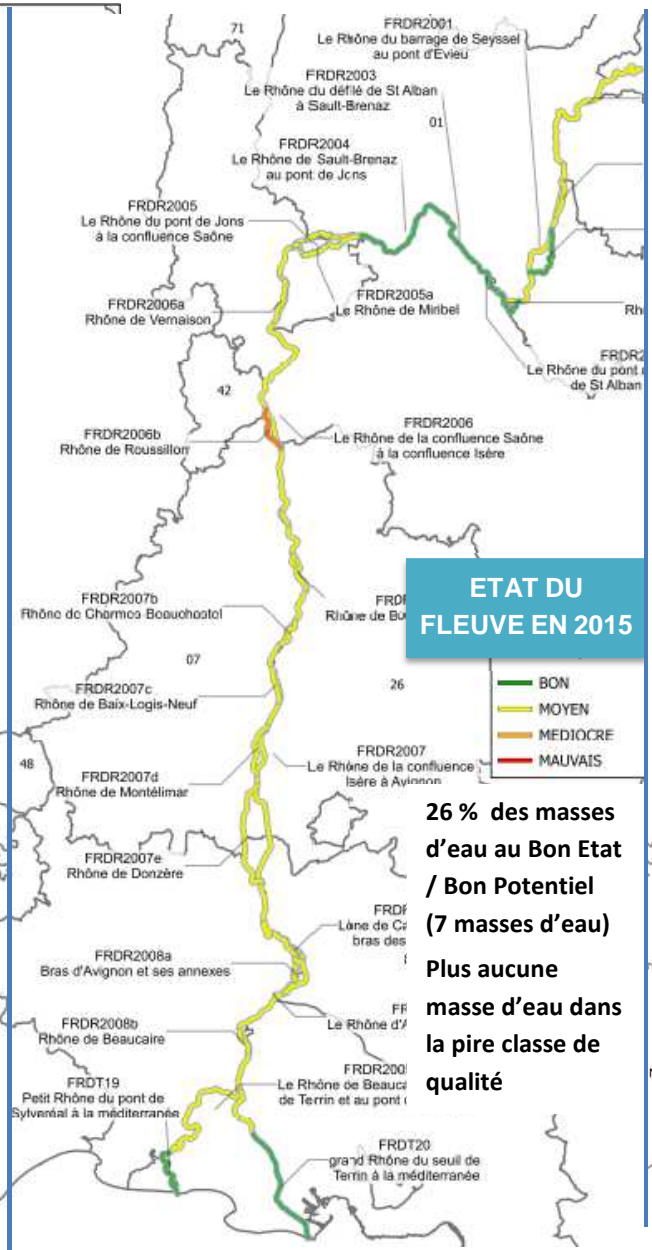


FLEUVE RHONE

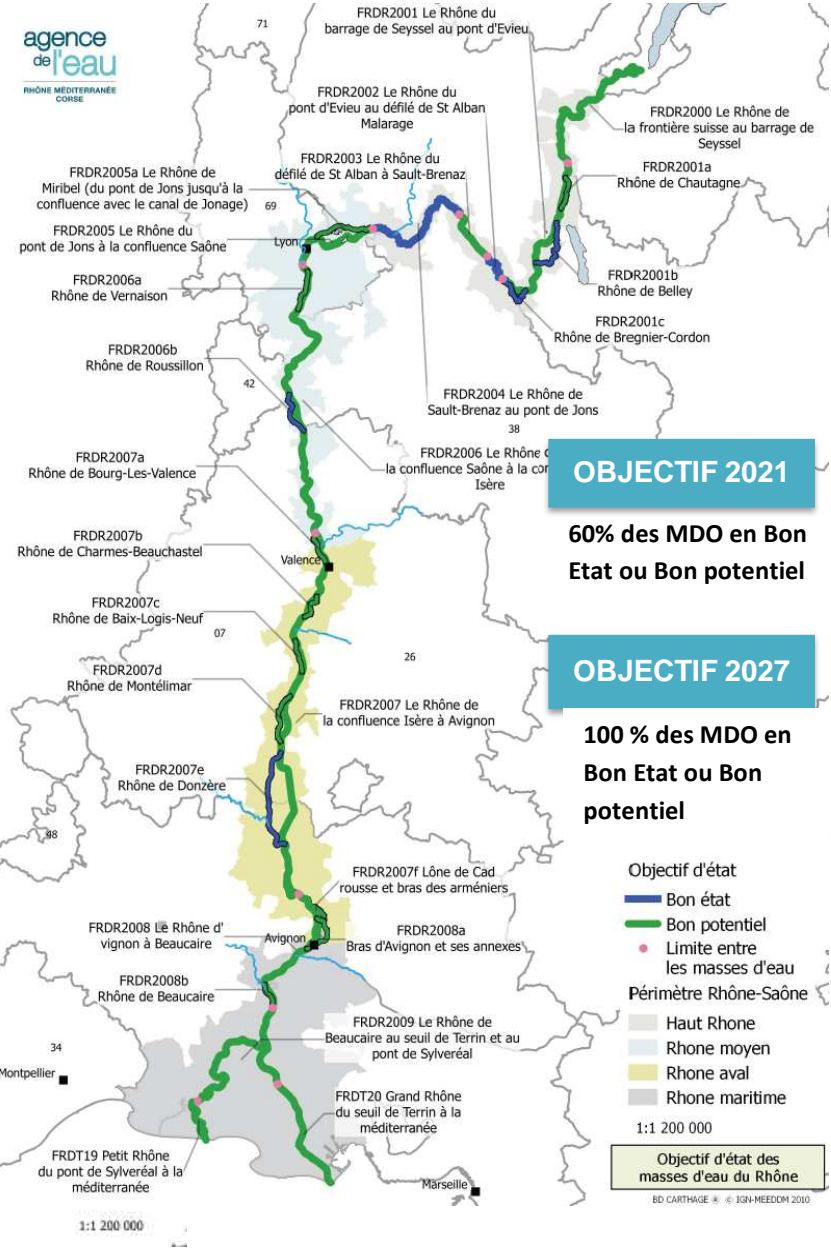
ETAT DU FLEUVE EN 1998, AVANT TRAVAUX DE RESTAURATION



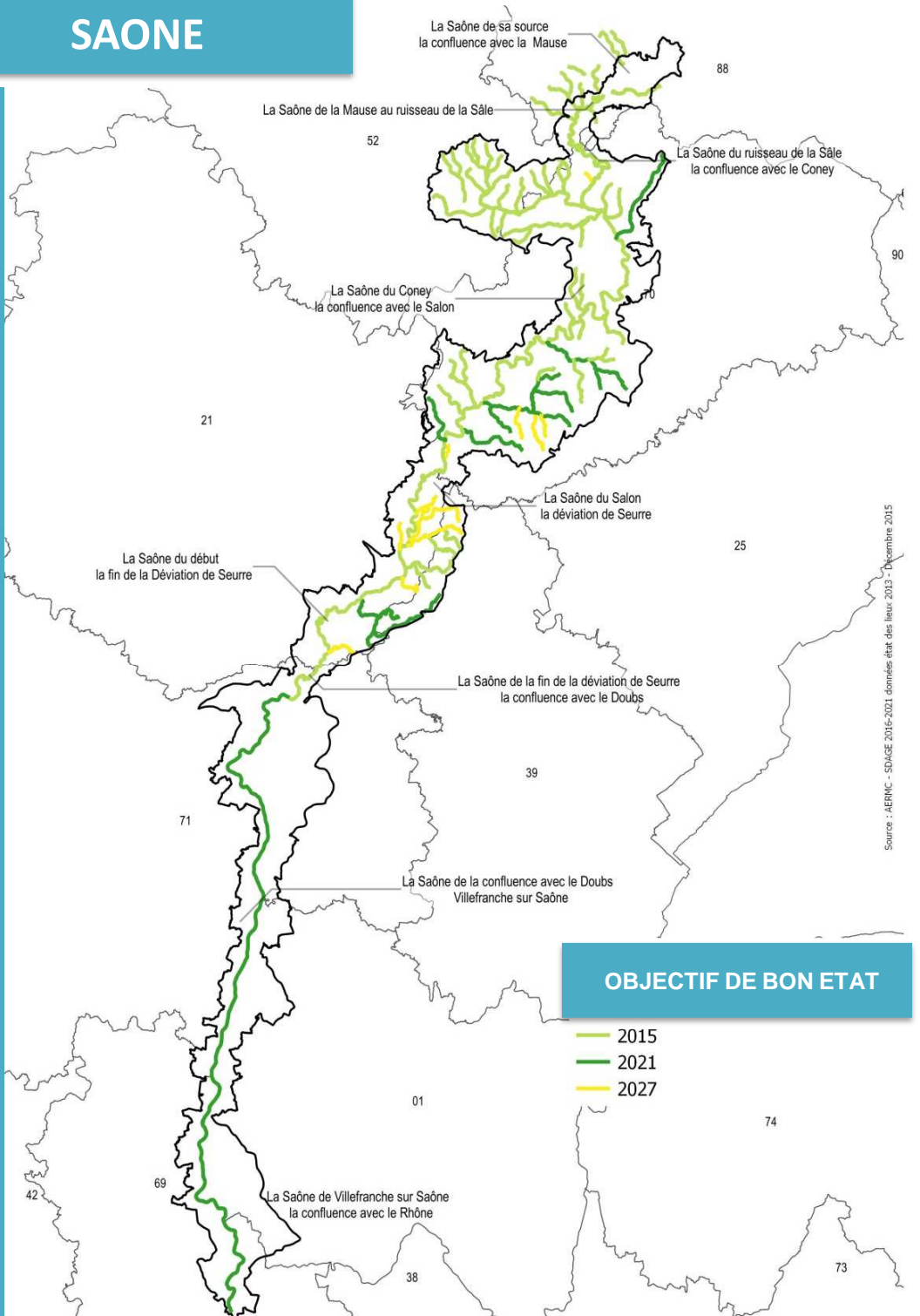
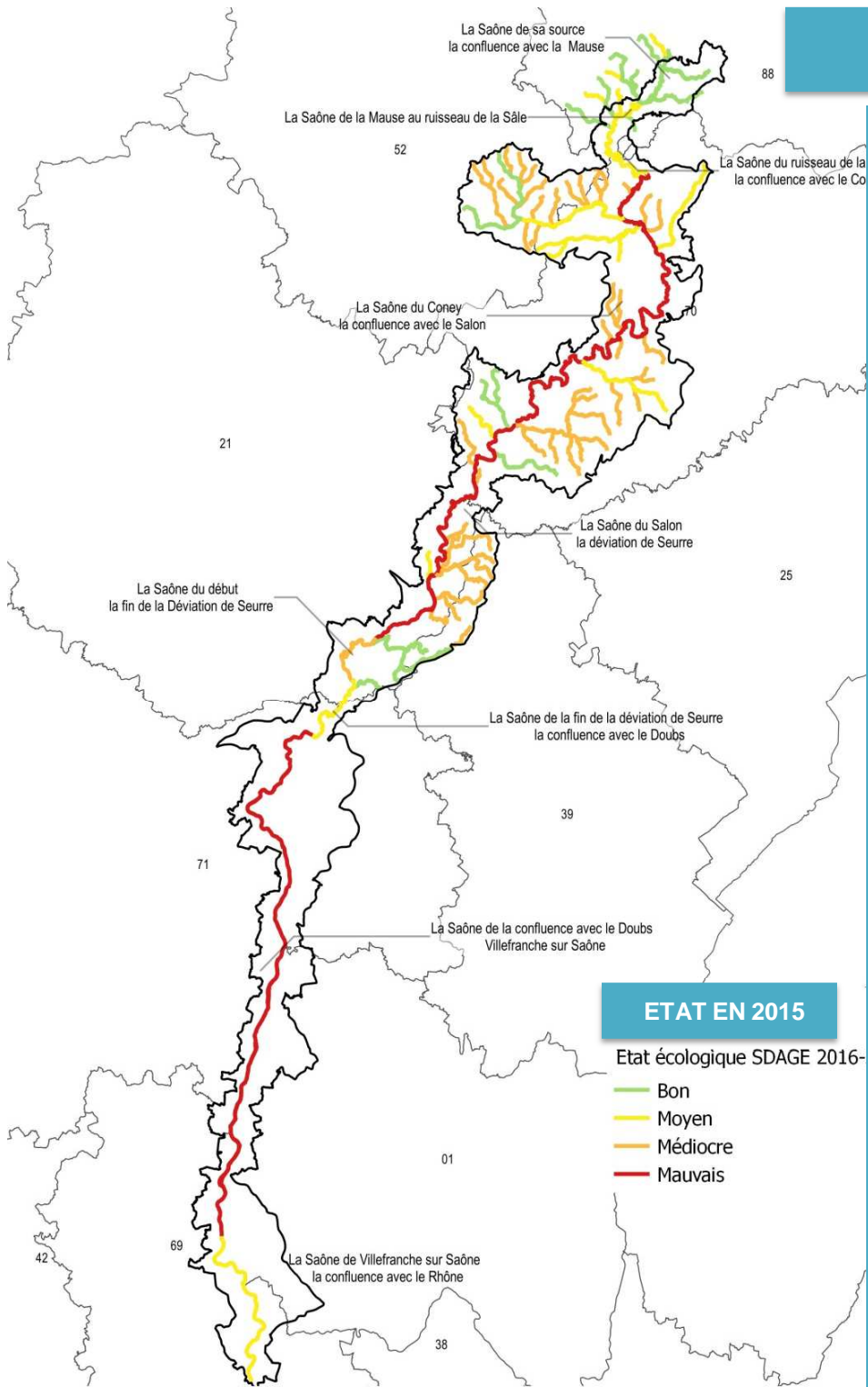
ETAT DU FLEUVE EN 2015



agence de l'eau RHONE MEDITERRANEE COSE



SAONE



Source : AENMC - SDAGE 2015-2021 données état des lieux 2013 - Décembre 2015